

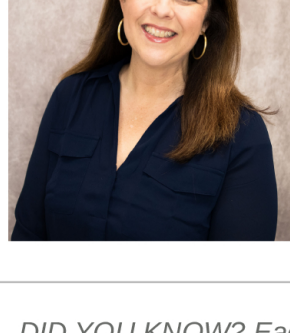


A LETTER from the PRESIDENT

As we turn the page into August, many of us are feeling that familiar energy on campus — students will soon be returning, classes kicking off, and football season right around the corner. It's a busy but exciting time of year, and I'm reminded of how fortunate we are to work in environments where learning, community, and tradition come together so easily.

This week, our NAADA Board will gather to continue the important work of guiding our association forward. Our committees are also rolling up their sleeves, diving into projects and initiatives that will help strengthen our network and the resources we provide. In the coming weeks, keep an eye out for announcements about upcoming virtual learning sessions — opportunities to connect, share, and grow with colleagues across the country.

Thank you for all you do on your campuses and within NAADA. Your dedication and engagement are what make our organization thrive, and I look forward to seeing the impact we will make together this fall.



Paula Beecher, Clemson University
2024-2025 President, NAADA

DID YOU KNOW? Each Newsletter Section Banner is clickable. Click each to explore more!



NAADA 1890 Connect

Sept 24, 2025 | 11:00 am CT | [CLICK HERE to Register](#)

The **1890 Connect** is a special event hosted by NAADA to introduce 1890 Land-Grant institutions to our mission, network, and impact. Designed to build awareness, foster connection, and spark collaboration, this gathering highlights how NAADA supports advancement professionals in fundraising, communications, alumni engagement, and more. We invite 1890 institutions to explore the benefits of membership and join us in shaping the future of agricultural higher education together.

Questions: Contact Robert Easley | robert@suttrueblue.org

SAVE the DATES

NAADA Volunteers Advantage Program Series / Cohort #3

Wednesdays, Oct 15 - Nov 5 | 11:30 am - 12:45 pm CT | [Registration Opens Soon](#)

Series dates 10-15, 10-22, 10-29, 11-5.

****This is a NAADA Virtual Certificate Program!***

Digging Deeper Hot Topic

Nov. 5, 2025 | 11:00 am CT | [Registration Opens Soon](#)

Let's dig deeper on Alumni board management and strategic planning.

Questions: Contact Amanda Clougherty | akbrown@umd.edu

Digging Deeper - Mentor Programs and Fundraising Campaigns

Dec 3, 2025 | 11:00 am CT | [Registration Opens Soon](#)

This is an Alumni Professionals Meet Up

Questions: Contact Amanda Clougherty | akbrown@umd.edu

2025-26 NAADA Leadership Team Board Meeting



The NAADA Leadership Team met in Moscow, Idaho, for their recent board meeting, hosted by the University of Idaho. They later visited Washington State University, just 7.9 miles down the road.

Fun Fact: Both Universities are NAADA members and the two closest land grant colleges in the United States.



MEMBERS OUT & ABOUT

Please share your photos as you are out and about meeting with one another!

Please submit photos, captions and names of those photographed by the 1st day of each month for publication in Connections to info@naada.org.

[Click Here to view 2025 Annual Conference Photos](#)

[Click Here for list of 2025 Individual Awards](#)

[Click Here to view 2025 Award Videos](#)

[Click Here for list of 2025 P&P Awards](#)



Welcome to our Newest NAADA Members

If you are a new member and not listed, please email info@naada.org.

Erica Andorf, Iowa State University

Debbie Dunham, Purdue University College of Agriculture

Brad Fife, Purdue University College of Agriculture

Kathy Heinsohn, Purdue University College of Agriculture

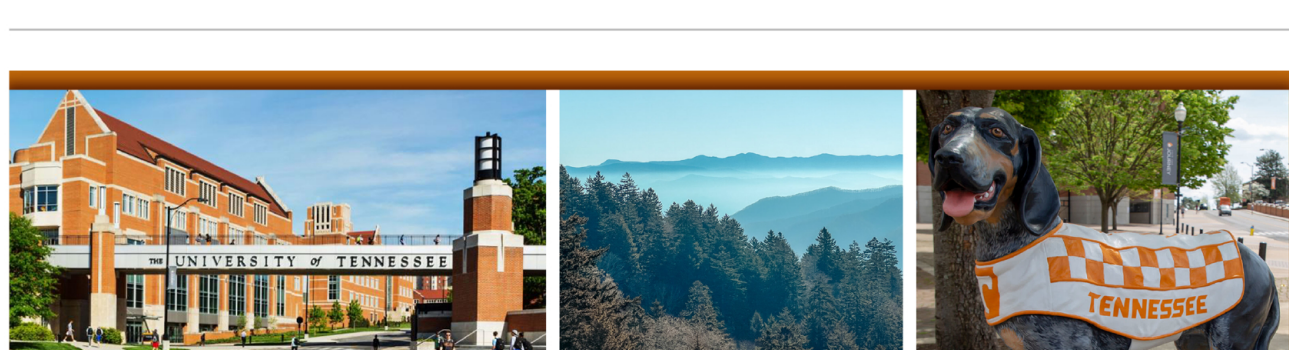
Cara McCauley, Purdue University College of Agriculture

Jill Parker, Purdue University College of Agriculture

Lauren Selby, University of Arkansas

Lexi Workman-Avent, University of Arkansas

[Click here to learn more about NAADA Membership Benefits!](#)



NAADA 2026 Annual Conference

June 15-19 | Knoxville, Tennessee



NAADA TRIVIA QUESTION

Please submit your selection to receive the correct answer.

The NAADA organization's first meeting in 1976 was focused on "ag alumni affairs." What year did the first development professional attend the annual NAADA meeting?

- A. 1979
- B. 1987
- C. 1999
- D. 2006

[Submit Your Answer](#)

Congratulations to Echo Payne, University of Minnesota and **Renee Keese**, Clemson University, who submitted the correct answer to the July trivia question:

The 51st annual NAADA conference will be hosted by the University of Tennessee in June 2026. How many times has UT hosted the conference in the past?

The answer was D. 0.

Tennessee will be hosting the conference for the first time next year.
Go Volunteers!

FOLLOW NAADA on the SOCIALS!



NAADA Headquarters | 400 E Randolph St | St 3115 | Chicago, IL 60601 | [800] 303-6062